

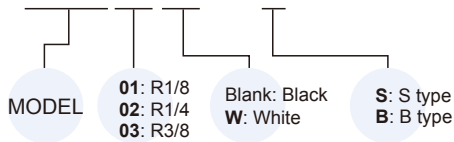
MSR* / MEF300 series

PLASTIC SILENCER / EXHAUST CLEANER



Order example

MSR01W — S

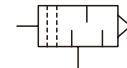


Order example

MEF300 — 03



Symbol

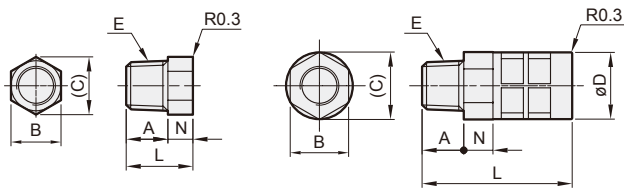


Specification

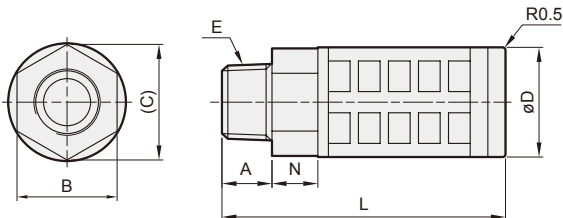
Model	MSR*
Medium	Air
Operating pressure range	0~0.9 MPa
Ambient temperature	0~+60°C

MSR01-S

MSR02-S



MSR*-B



MSR*-*

Model	Code Port size	A	B	C	D	E	L	N
MSR01-S	R1/8	10	10	11.5	—	R1/8	16	6
MSR01-B	R1/8	7	14	16.2	16	R1/8	33	7
MSR02-S	R1/4	10	14	16.2	16	R1/4	36	7
MSR02-B	R1/4	10	17	19.6	20.3	R1/4	63	8.5
MSR03-B	R3/8	12	24	26.2	26.3	R3/8	67.5	11

Specification

Model	MEF300
Port size	Rc3/8
Medium	Air
Operating pressure range	0~0.9 MPa
Filter element	6 μm
Ambient temperature	0~+60°C

Features

- The MEF300 can remove oil mist and dust in exhaust air for keeping environment clean.

