

MAR201 series

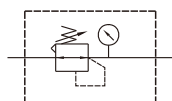
PRESSURE REGULATOR



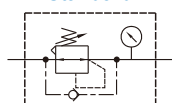
Mindman



Symbol



Standard



Backflow

Specification

Model	MAR201	
Bore No.	6A	8A
Port size	1/8	1/4
Medium	Air	
Max. operating pressure	1 MPa	
Proof pressure	1.5 MPa	
Regulated pressure range	Standard type: 0.05~0.85 MPa	
Ambient temperature	- 5~+60°C (No freezing)	
Attachment	L type bracket	
Option	Pressure gauge (PG-40)	
Weight	190 g	

Order example

MAR201 K — 6A — □ — 1K — C — □ — □

MODEL

PORT SIZE

6A: 1/8
8A: 1/4

EXHAUST MECHANISM

Blank: Relieving type
Q: Non-relieving type

ADJUSTABLE PRESS. RANGE

Blank: 0.05~0.85 MPa
1K: 0.05~0.1 MPa
2K: 0.05~0.2 MPa
3K: 0.05~0.3 MPa
4K: 0.05~0.4 MPa

BRACKET

Blank: L type
B3: Z type

PORT THREAD

Blank: Rc thread
G: G thread
NPT: NPT thread

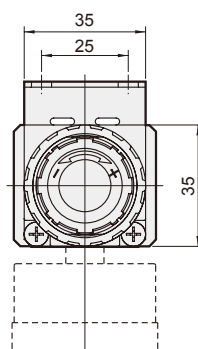
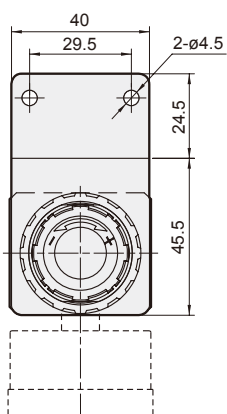
Blank: Standard
K: Backflow function

Blank: Without pressure gauge
C: Pressure gauge (PG-40)

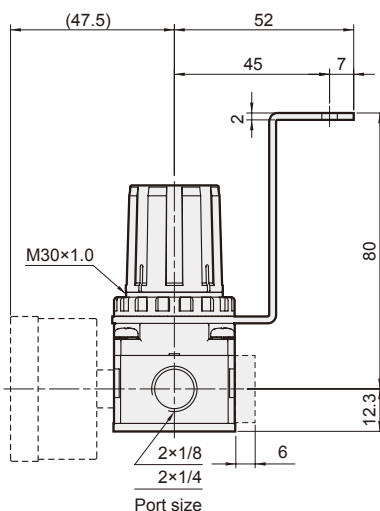
* The backflow module can not be exchange with gauge. When choosing the flow direction is left to right, the knob is up.

* Standard type regulator can not release the outlet pressure completely, even if inlet pressure was cut off, and the backflow function (K) must be applied to completely remove the residual pressure.

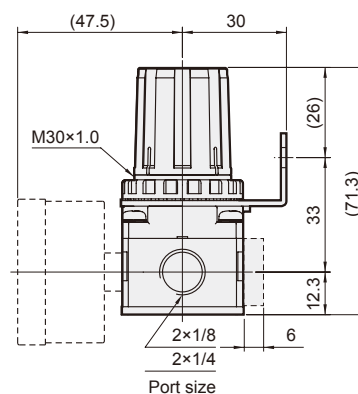
* The (Q) non-relieving type regulator is used. When the output pressure is higher than the set pressure, the output pressure will not flow out through the exhaust hole.



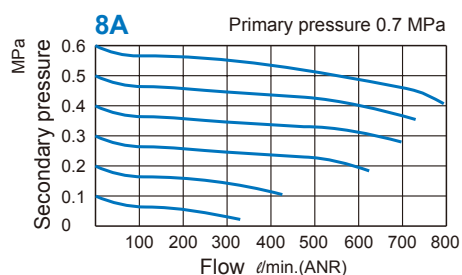
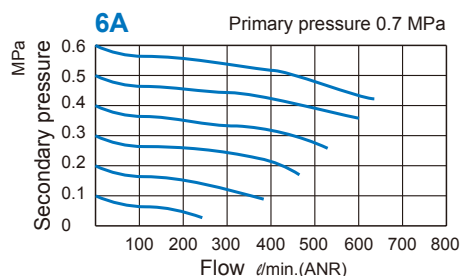
Z type bracket



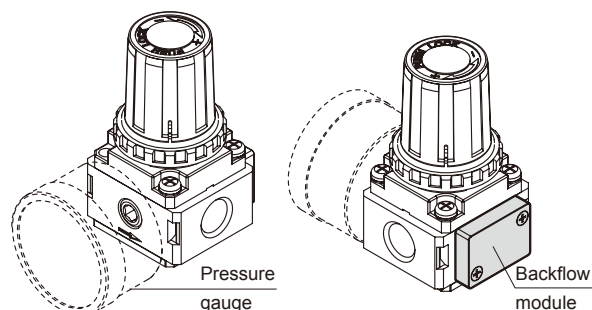
L type bracket



Flow feature



Precautions



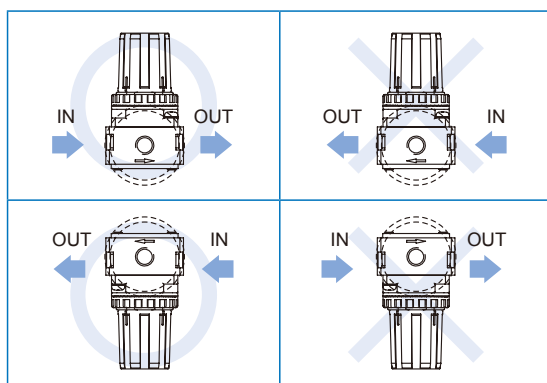
- When the air supply is cut off, the inlet pressure less than outlet pressure, the residual pressure return to the inlet side.
- Please set the inlet pressure to at least 0.05 MPa higher than the set pressure.

Working principle

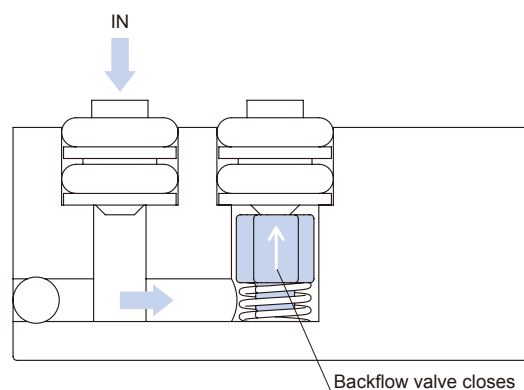
Normally, as the inlet pressure (IN) is higher than the setting pressure (pressure of outlet), the backflow valve is closed. If the inlet pressure is cut off, backflow valve will be opened and the outlet pressure is exhausted to IN port.

Installation direction

When choosing the flow direction, the backflow module can not be exchange with gauge. If you have special order request, please contact the business.



Normal air supply



Cut off air source

