

Series 6015 Product Overview

Features:

- Smallest of the solid base Straight Line Action clamps
- Compact design combined with high holding capacity
- Allow handle to fall below mounting plane to lock in retracted position

Applications:

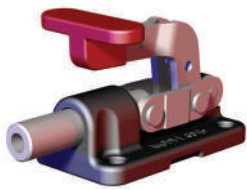
- Assembly
- Checking fixtures
- Tensioning devices

Also Available:

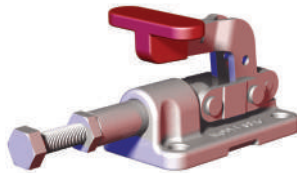
See page 7.1 for accessories

Covered under one year or more U.S./International Patents

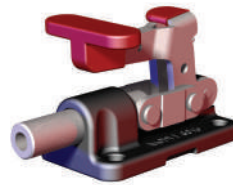
6015
6015-M



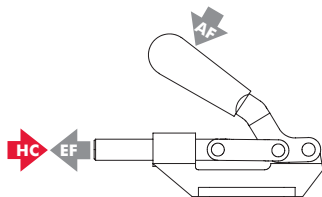
6015-SS,
6015-MSS
Stainless
Steel



6015-R,
6015-MR
with DE-STA-CO®
Toggle Lock
Plus



Series 6015 Technical Information, Holding Capacities



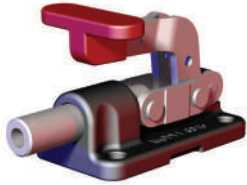
Model	Max. Holding Capacity	Weight	EF:AF (pushing/pulling)	Plunger Travel	(M) Plunger Thread	Recommended Spindle (Not Supplied)
6015	[560 lbf] 2500 N	[0.35lb] 0,15kg	35:1	[0.70] 17,8	1/4-20	205203
6015-M					M6	205203-M
6015-SS	[630 lbf] 2800 N	[0.35lb] 0,15kg	35:1	[0.70] 17,8	1/4-20	202943 (supplied)
6015-MSS					M6	202916-M (supplied)
6015-R	[560 lbf] 2500 N	[0.35lb] 0,15kg	35:1	[0.70] 17,8	1/4-20	205203
6015-MR					M6	205203-M

HC = Holding Capacity, EF = Exerting Force, AF = Applied Force

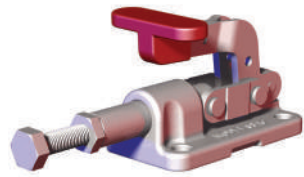


Series 6015 Standard Clamp Dimensions 6015/-M/-SS/-MSS/-R/-MR

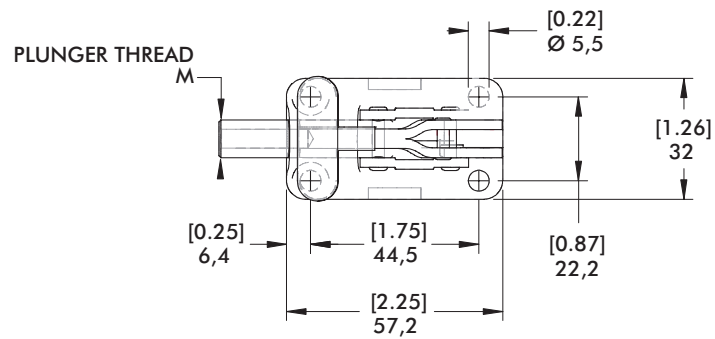
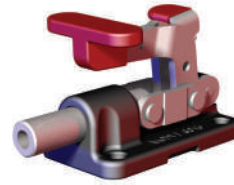
6015
6015-M



6015-SS,
6015-MSS
Stainless
Steel



6015-R,
6015-MR
with DE-STA-CO®
Toggle Lock Plus



DE-STA-CO®
TOGGLE LOCK
PLUS OPTION
6015-R / 6015-MR
(Engages in extended
position only)

