

Series 202 Product Overview

Features:

- Two bar styles available
- Low profile T-Handle version available
- Available in stainless steel
- Accommodates M6 or 1/4" spindle accessories
- BLK models feature a black, non-reflective finish

Applications:

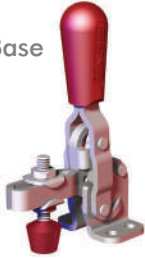
- Checking fixtures
- Assembly & test
- Light machining
- Woodworking

Also Available:

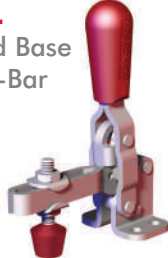
See page 7.1 for accessories

802-U Pneumatic Toggle Clamp
(See page 9.5)

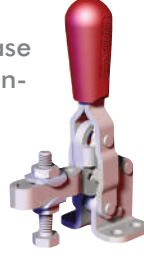
202-U
Flanged Base
U-Bar



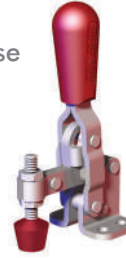
202-UL
Flanged Base
Long U-Bar



202-USS
Flanged Base
U-bar, Stain-
less Steel



202
Flange Base
Solid Bar



202-SS
Flanged Base
Solid Bar
Stainless Steel



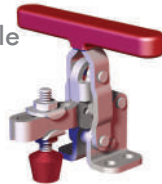
202-UB
Straight Base
U-bar



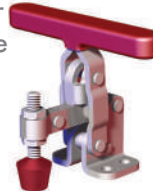
202-B
Straight Base
Solid Bar



202-TU
Flanged Base
U-bar,
T-Handle



202-T
Flanged Base
Solid Bar
T-Handle



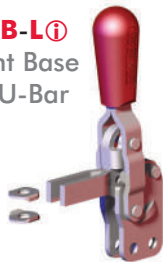
202-U-L ⓘ
Flanged Base
Open U-Bar



202-U-L-BLK ⓘ
Blackout Series
Flanged Base
Open U-Bar



202-UB-L ⓘ
Straight Base
Open U-Bar



202-UB-L-BLK ⓘ
Blackout Series
Straight Base
Open U-Bar



202305
Flanged Grip.
Provides added safety
and protection. Fits all
202 Series (except
T-Handle) clamps.
Order separately.



Note: Clamps shown with included accessories.

ⓘ This item is available upon request

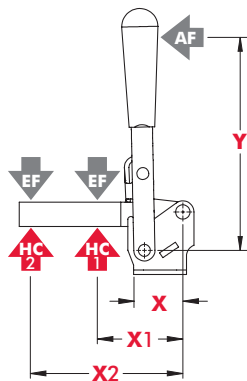


Series 202 Technical Information

Model	Max. Holding Capacity	Clamp Bar Opening (+10°)	Handle Opening (+10°)	Weight	Accessories (Supplied)		
					Spindle Assembly	Flanged Washers	
202-U	890 N [200 lbf]	105°	65°	0,16kg [0.35lbs]	202208-M	215105	
202-UL					202943-M	215905	
202-USS	202208-M			---			
202	0,15kg [0.33lbs]			205943-M	---		
202-SS				202208-M	215105		
202-UB	890 N [200 lbf]			0,16kg [0.35lbs]	0,15kg [0.33lbs]	202208-M	215105
202-B							
202-TU							
202-T	890 N [200 lbf]			0,16kg [0.35lbs]	---	---	---
202-U-L ⓘ							
202-U-L-BLK ⓘ							
202-UB-L ⓘ							
202-UB-L-BLK ⓘ							

ⓘ This item is available upon request

Series 202 Holding Capacities



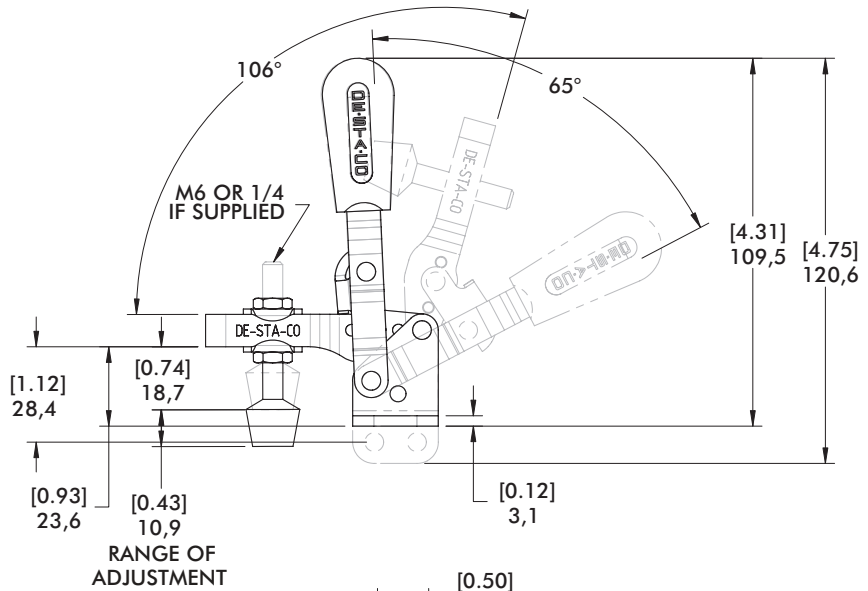
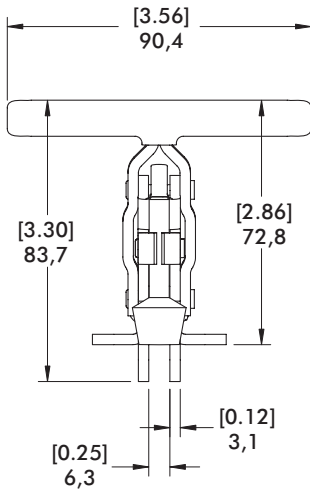
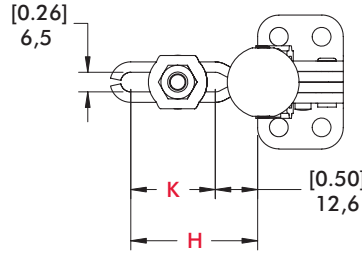
Model	X	X1	X2	Y	±HC1	±HC2	±EF(X1):AF	±EF(X2):AF	
202-U	[0.79] 20	[1.25] 32	[2.25] 57	[3.42]	[200 lbf] 890N	[140 lbf] 625N	10:1	5:1	
202-UL			[2.88] 73	87	[250 lbf] 1110N	[150 lbf] 670N		4:1	
202-USS			[2.25] 57	[3.00] 76	[200 lbf] 890N	[170 lbf] 760N		5:1	
202		---	[1.88] 48	[3.42] 87	---	[200 lbf] 890N	---	8:1	
202-SS		---		[3.00] 76	---	[250 lbf] 1110N	---		
202-UB		[1.25] 32	[2.25] 57	[3.42]	[200 lbf] 890N	[140 lbf] 625N	10:1	5:1	
202-B		---	[1.88] 48	87	---	[200 lbf] 890N	---	8:1	
202-TU		[1.25] 32	[2.25] 57	[2.13]	[200 lbf] 890N	[140 lbf] 625N	11:1	7:1	
202-T		---	[1.88] 48	54	---	[200 lbf] 890N	---	6:1	
202-U-L ⓘ									
202-U-L-BLK ⓘ			[1.25] 32	[2.25] 57	[3.42] 87	[200 lbf] 890N	[140 lbf] 625N	10:1	5:1
202-UB-L ⓘ									
202-UB-L-BLK ⓘ									

Dimensions shown "mm [inch]" ± HC = Holding Capacity, EF = Exerting Force, AF = Applied Force

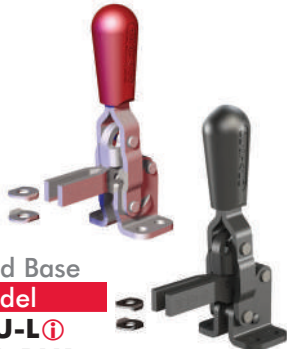
ⓘ This item is available upon request

Series 202 Standard Clamp Dimensions
202/-U/-UL/-USS/-SS/-UB/-B/-TU/-T

202-U
Flanged Base
U-Bar

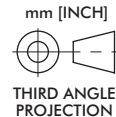
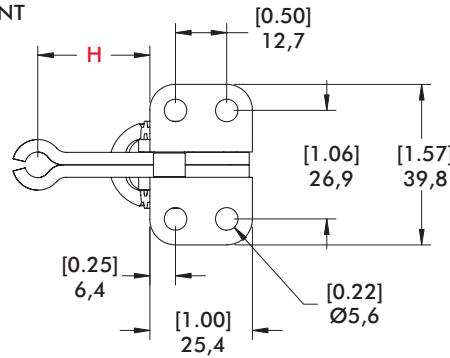
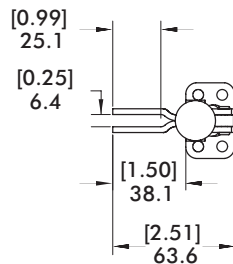


Series 202 Open Bar



Flanged Base
Model
202-U-L ⓘ
202-U-L-BLK ⓘ

See page (7.7)
for complete
offering of open
bar accessories



Straight Base
Model
202-UB-L ⓘ
202-UB-L-BLK ⓘ



Bar Style	Clamp Models	H	K
	202-U/202-UB/ 202-USS/202-TU	[1.73] 44,1	[0.98] 25
	202-UL ⓘ	[2.29] 58,1	[1.51] 38,4
	202/202-B/ 202-T/202-SS	[1.08] 27,4	---
	202-U-L ⓘ/ 202-UB-L ⓘ	[1.50] 38,1	---

ⓘ This item is available upon request

Application Areas

Clamping during the assembling, drilling, testing, gluing, locking of covers and much more. The vertical clamp is the most frequently used product whenever clamping products are to be integrated with a manual fixture.

The essential product features

- In the clamping position, the handle is vertical
- Vertical clamps open at an angle between 75° and 215°
- Vertical clamps are offered with U-shaped or heavy-duty solid clamping bars
- Vertical clamps have a straight or flanged base.
The heavy-duty vertical clamps possess a base that can be welded on without a hole pattern

