

# MVSE-260 series

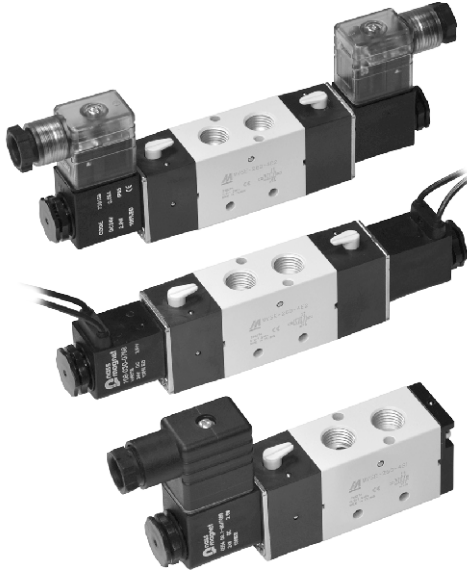
## SOLENOID VALVE



mindman

### Specification

Model	4E1,4E2	4E2C.P.R
Bore No.	8A	
Port size	Rc1/4	
No. of port	5	
No. of position	2	3
Medium	Air	
Operating pressure range	0.2~1.2 MPa	0.3~1.2 MPa
Proof pressure	1.5 MPa	
Effective orifice	18 mm <sup>2</sup>	16 mm <sup>2</sup>
Response time	-5~+50°C (No freezing)	
Ambient temperature	40 ms	35 ms
Voltage	AC110V, AC220V (50/60)Hz, DC24V	
Power consumption	AC=6/4.9VA, DC=2.5W	
Available voltage range	±10%	
Insulation class	F class	
Weight	255 g, 350 g	405 g



### Order example of valve

MVSE – 260 – 4E2C – AC110 – L – G

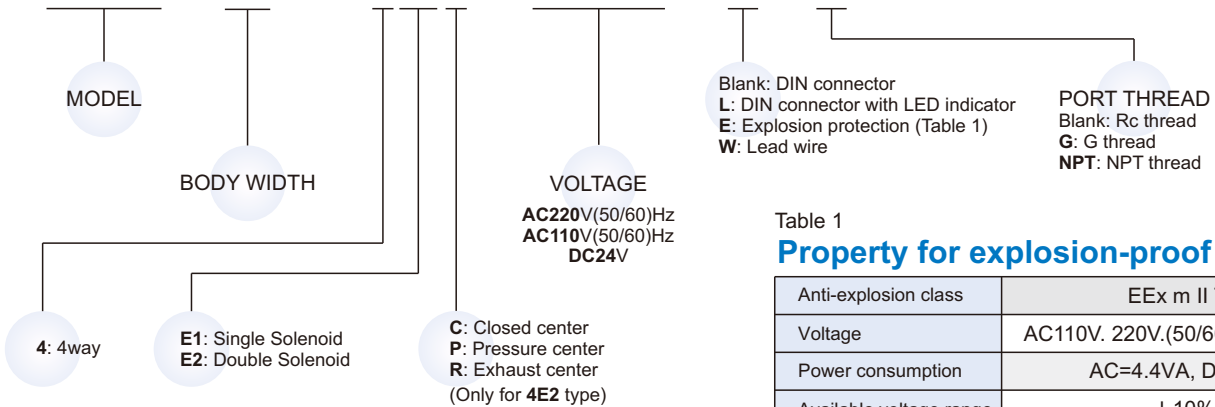
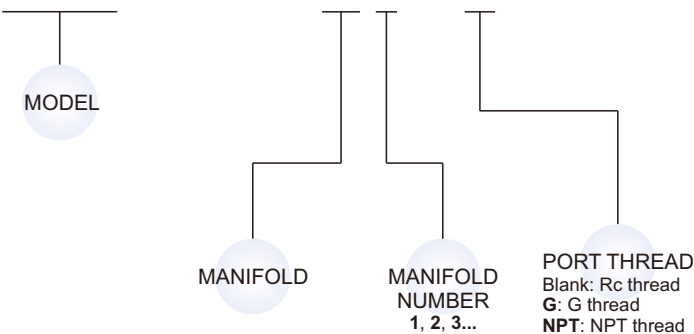


Table 1  
Property for explosion-proof type

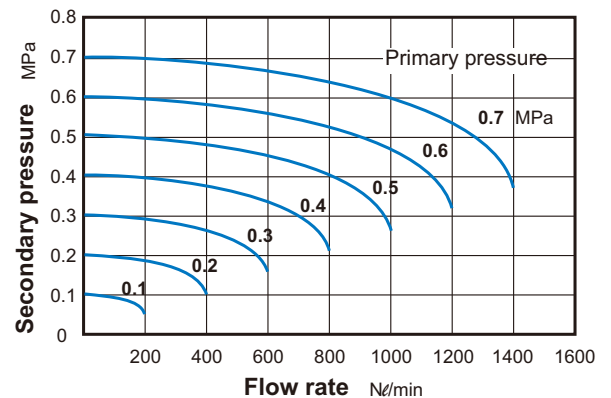
Anti-explosion class	EEx m II T4
Voltage	AC110V, 220V,(50/60)Hz, DC24V.
Power consumption	AC=4.4VA, DC=5W
Available voltage range	±10%
Insulation class	F class

### Order example of manifold

MVSE – 260 – 5B3 – G



### Flow features



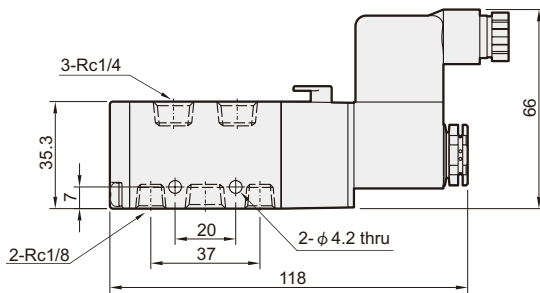
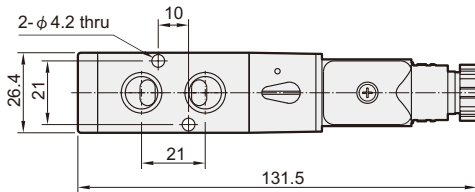
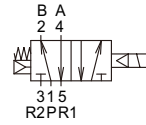
mindman

# MVSE-260 Dimensions

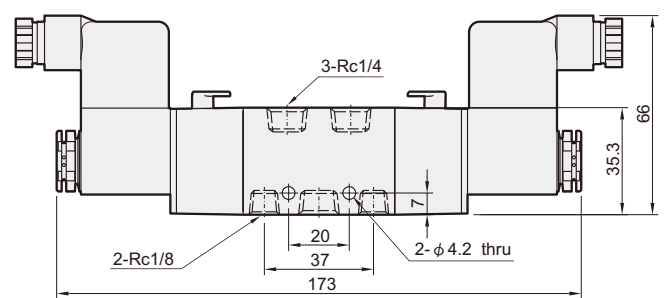
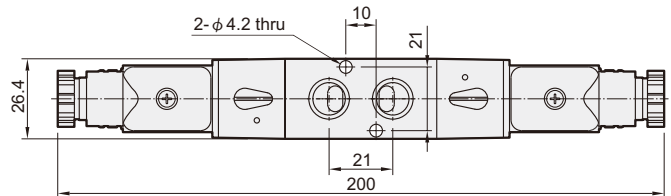
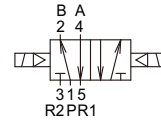
## SOLENOID VALVE



### MVSE-260-4E1



### MVSE-260-4E2

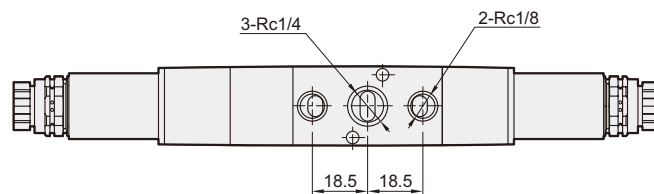
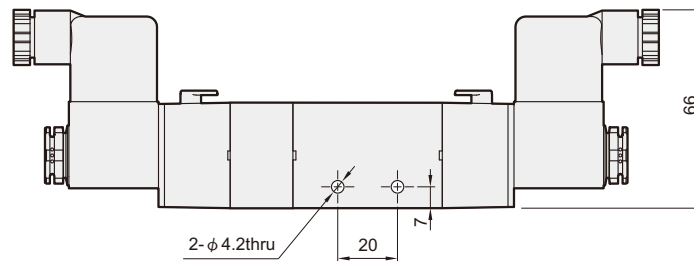
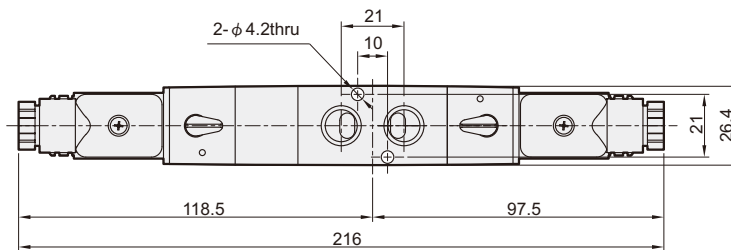
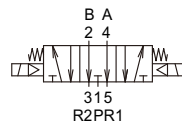
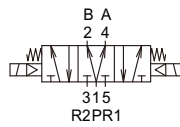
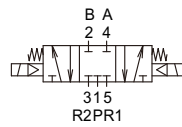


### MVSE-260-4E2C.P.R

#### MVSE-260-4E2C

#### MVSE-260-4E2P

#### MVSE-260-4E2R



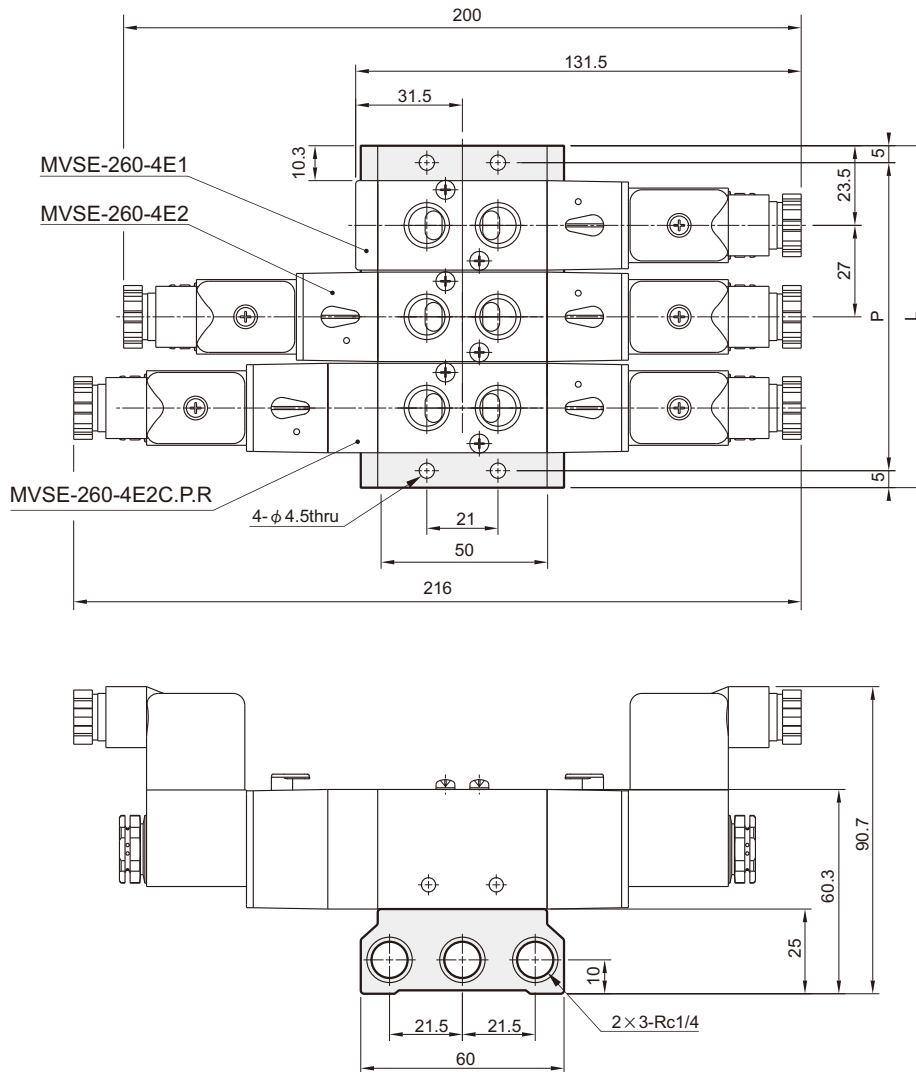
# MVSE-260 Manifold

## SOLENOID VALVE



### Manifold of solenoid valve

#### MVSE-260-5B\*



No. of stations	P	L
2	64	74
3	91	101
4	118	128
5	145	155
6	172	182
7	199	209
8	226	236
9	253	263
10	280	290

