

MVSA-150 series

SOLENOID VALVE



mindman

Specification



Model	4E1	4E2
Bore No.	M5	
Port size	M5×0.8	
No. of port	5	
No. of position	2	
Medium	Air	
Operating pressure range	0.15~0.8 MPa	
Proof pressure	1 MPa	
Effective orifice	3.8 mm ²	
Response time	30 ms	
Ambient temperature	-5~+50℃ (No freezing)	
Voltage	AC110V, 220V (50/60)Hz, DC24V	
Power consumption	AC=2.1/1.8VA, DC=1.6W	
Available voltage range	±10%	
Insulation class	B class	
Weight	76 g	115 g

Order example of valve

MVSA – 150M – 4E2 – AC110 – L

MODEL

BODY WIDTH

VOLTAGE

AC220V(50/60)Hz
AC110V(50/60)Hz
DC24V

Blank: Body ported type
M: Manifold type

4: 4way

E1: Single solenoid
E2: Double solenoid

Blank: Lead wire
L: Lead wire with LED indicator

Order example of manifold

MVSA – 150M – 5M3

MODEL

Blank: Body ported type
M: Manifold type

MANIFOLD
5B: for body ported type
5M: for manifold type

MANIFOLD NUMBER
1, 2, 3....



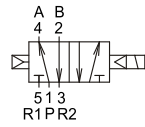
mindman

MVSA-150 Dimensions

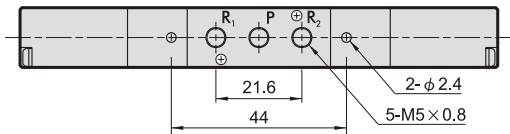
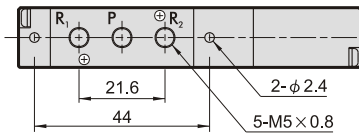
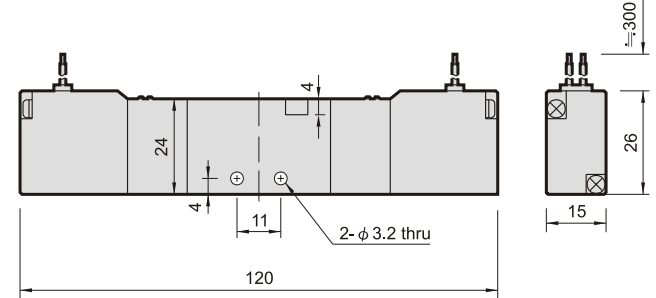
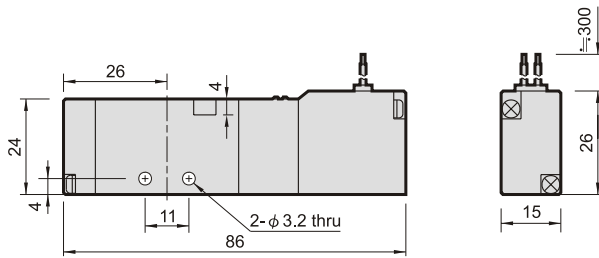
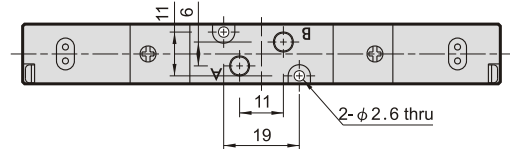
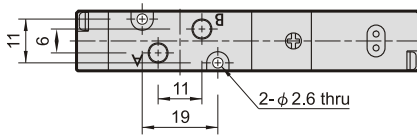
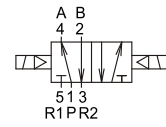
SOLENOID VALVE



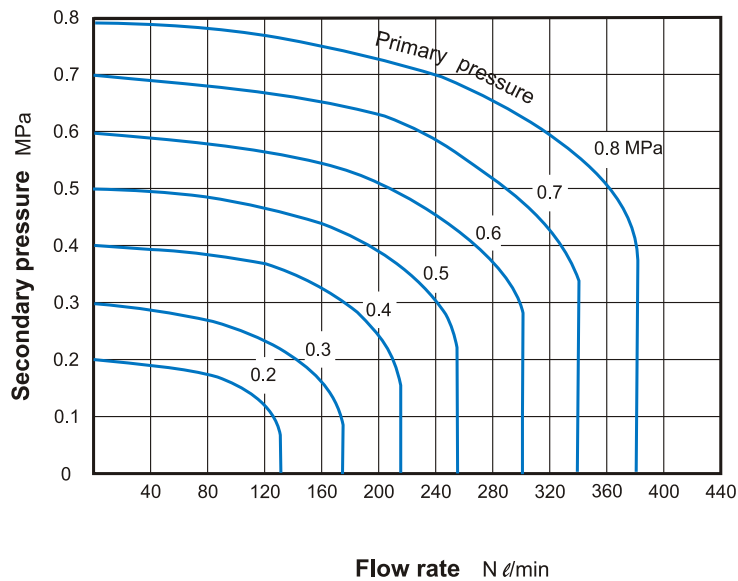
MVSA-150-4E1



MVSA-150-4E2



Flow features



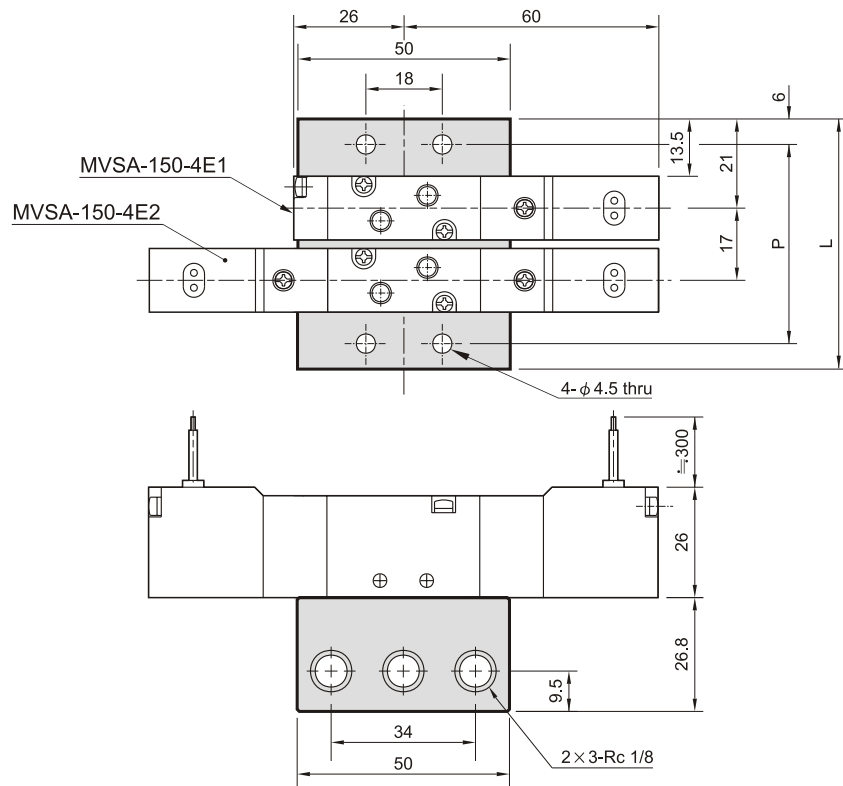
MVSA-150 Manifold

SOLENOID VALVE

MVSA-150-5B*

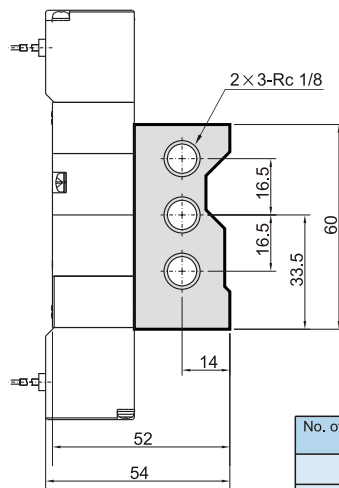
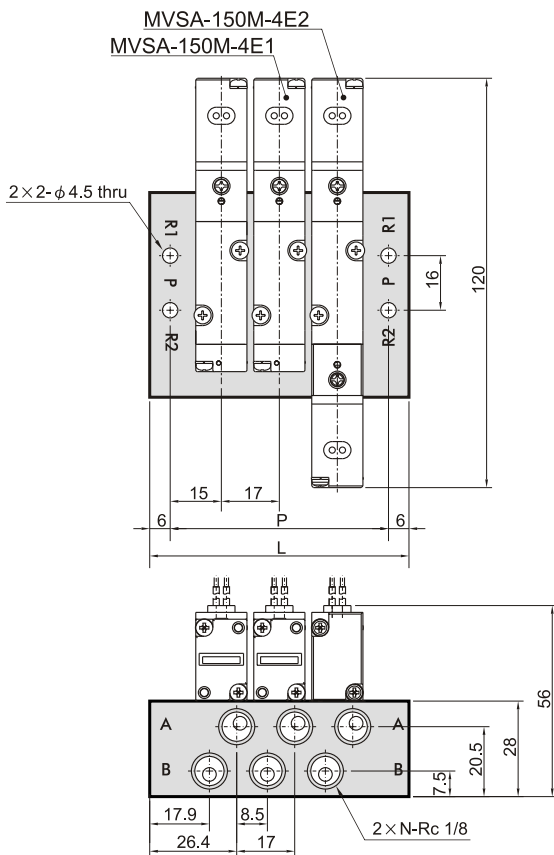
Body ported type

No. of stations	P	L
2	47	59
3	64	76
4	81	93
5	98	110
6	115	127
7	132	144
8	149	161
9	166	178
10	183	195



MVSA-150M-5M*

Manifold type



No. of stations (N)	P	L
2	47	59
3	64	76
4	81	93
5	98	110
6	115	127
7	132	144
8	149	161
9	166	178
10	183	195